

---

## Families and Children's Transformation (FACT) programme update

### Purpose of Report

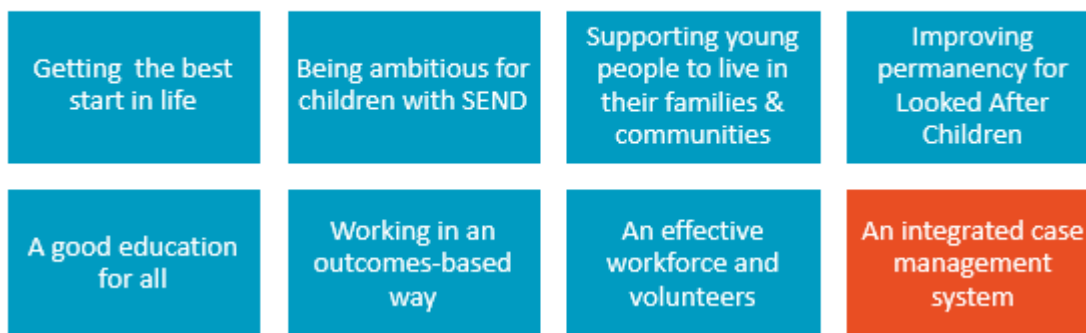
1. To provide a brief update to the Schools Forum on progress of the Families and Children's Transformation (FACT) programme.

**“ensuring all Wiltshire families thrive”**

### Background

2. An introductory presentation on the FACT Programme was delivered to the Schools Forum on 28 June 2018. This document provides an update on key activity and progress in the interim.
3. FACT is a partnership programme designed to achieve whole-system change in order to significantly improve the outcomes of all our children living safely, healthily and happily in their own families and communities. FACT is comprised of 8 workstreams and around 30 projects (appendix 1):

8 Workstreams, over 30 projects



### Update

#### **A shared, ambitious Partnership Strategy**

4. The FACT Programme is currently running co-production events with children, families and colleagues across the partnership to gather insights into what's critically important to them and to **co-produce a shared Partnership Strategy**.
5. The Partnership Strategy will describe our “relentless determination to enhance social mobility, build resilience and deliver more efficient and impactful services

that in turn improve outcomes for children and families whilst delivering savings both to the Local Authority and the wider partnership”.

6. The workstreams within FACT will both inform and be informed by the Strategy – which will be underpinned by our core principles (appendix 2).



### **A Good Education for All workstream**

7. The **Good Education for All** workstream is focusing on ensuring that all vulnerable children achieve their academic potential and has a particular focus on closing the gap for pupils from vulnerable groups. The workstream is taking a whole school/whole system approach to working in an inclusive and trauma-informed way.
8. Following feedback before the summer break it became apparent that we needed to rethink, together, how best to pursue these aspirations without causing duplication or gaps with the RESET project (the council’s project to align the objectives of the Education and Skills directorate with Economic Regeneration as part of its ambition to deliver improved social mobility in Wiltshire) and the development of the Education Transformation Board.
9. In view of this, engagement sessions with schools and other key stakeholders will be established to help shape and develop the critical projects within this workstream.

### **IT-enabled integrated working**

10. Wiltshire Council is investing in a new **Case Management System** which brings together and replaces multiple IT systems across early years, education, early help, SEND and safeguarding into one system.
11. The FACT Board’s aspiration is to deliver IT-enabled integrated working across agencies by **sharing access with our partners** (within relevant consent and information sharing protocols).

12. The new case management system will enable users to input, read and retrieve information relevant to the child and family they are working with - allowing faster and safer exchange of information, more informed decision making and enabling practitioners to see the impact of service provision.
13. Furthermore, the new system will streamline IT and admin based activities for all users, releasing time to spend with children and families.
14. To determine partners appetite and readiness for this opportunity, consultation with partners is currently being undertaken (workshops with school Designated Safeguarding Leads are taking place during October).
15. The social care and early help modules of the new system are being rolled out to Council colleagues in November 2018, with key partner agencies coming online from January 2019 onwards. The roll-out of further modules (such as Early Years, School Admissions, Education and SEN) will then follow.

### **Creation of an Early Support Hub (to sit alongside the MASH)**

16. On 31 July 2018, the FACT Programme Board signed off proposals for the creation of the **Early Support Hub**.
17. The Early Support Hub will support cases that do not meet the current thresholds for MASH intervention. 75% of Contacts to our front door do not require allocation to social care but require professional advice, consultation and careful brokering of appropriate early support.
18. We know that when we invest time and expertise to advise and support professionals effectively, we see less demand back into our front door as there is a higher likelihood that the child and family's needs will be appropriately met (as evidenced by audits and analysis of MASH Consultation outcomes).



19. The Early Support Hub will sit alongside the MASH and be resourced to more effectively support those enquiries that, on review, do not require social care resource. Implementation is underway and further communications on these developments (including anticipated launch date) will follow.
20. Advice and guidance within the Early Support Hub will be governed by the **revised safeguarding threshold guidance** - which will be out for consultation

by the Wiltshire Safeguarding Children Board this autumn. This guidance will meet the Wiltshire Safeguarding Children's Board statutory requirements and be owned by them but will also incorporate a partnership approach to how thresholds will be managed reflecting a common language.

21. It is anticipated that this will promote a conversational based approach to determining the services required and encourage a holistic review of the family situation to ensure that all contributing factors have been taken into account.
22. The FACT Programme is broad and deep in scope and ambition. Relevant key updates have been included in this paper; to keep up to date with wider FACT developments, the Programme is developing a website which will contain the latest news (at <http://www.wiltshire.gov.uk/children-young-people-fact>). Newsletters will continue to be circulated and involvement is open to all by emailing [FACT@wiltshire.gov.uk](mailto:FACT@wiltshire.gov.uk).

---

**Report Author:**

Tamsin Stone, Families and Children's Transformation Programme

30 September 2018

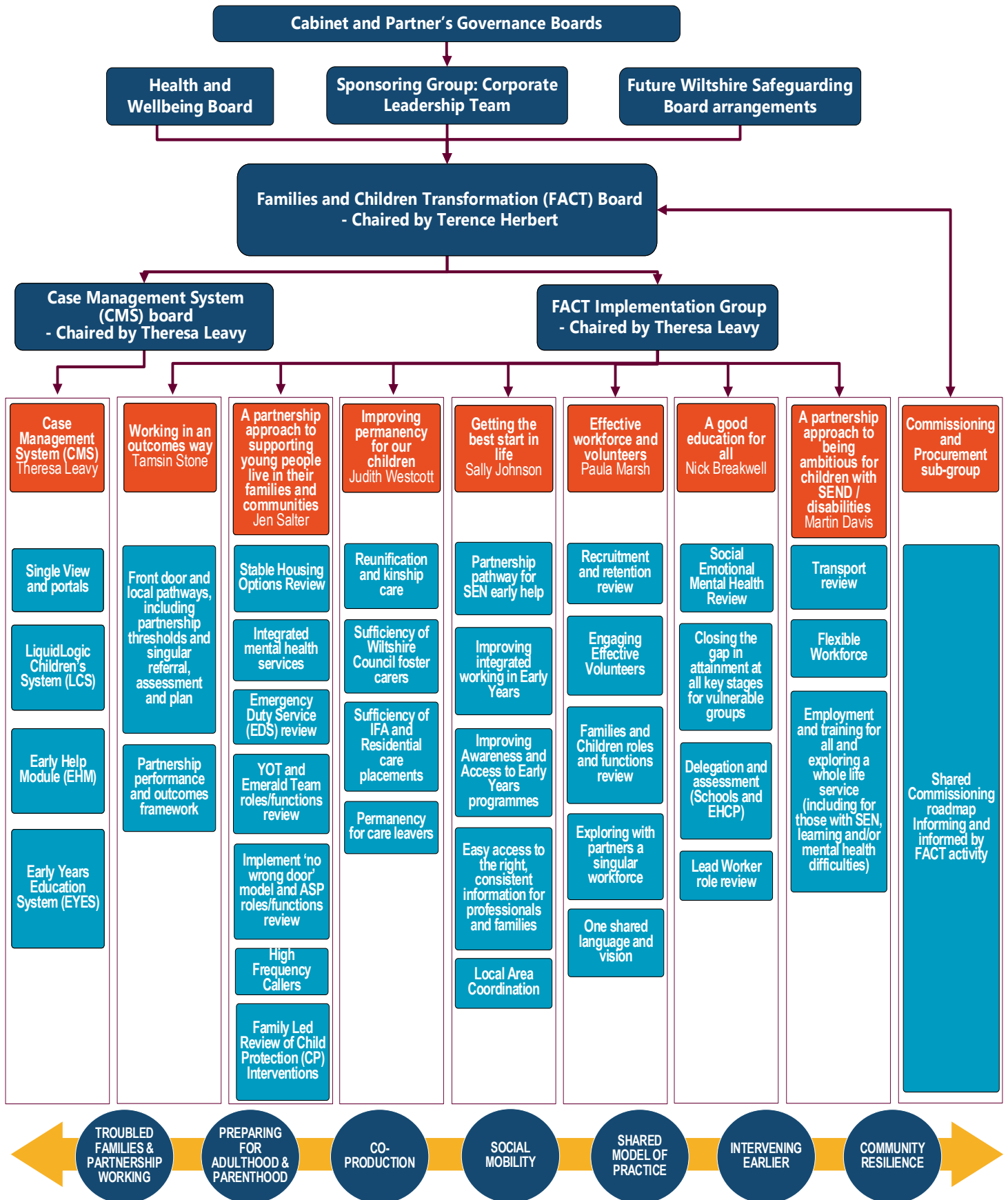
**Background Papers**

None

**Appendices**

1. FACT Governance Chart
2. FACT Core Principles

# 1. FACT Governance Chart



## 2. FACT Core Principles:

### **Help when you need it**

We will intervene earlier – we will provide support early to prevent families' difficulties escalating and in doing so improve outcomes and reduce demand for higher tier services

### **We are Better Together**

We will streamline, simplify and integrate processes and work towards a fully integrated multi-agency model of intervention.

### **More time to be with Families**

We will maximise the time our staff can spend with families and in doing so improve the child's experience of support.

### **Investing in our Staff**

We will ensure we are an effective confident workforce with an effective practice framework.

### **Resilient communities with Equity of Opportunity**

We want to ensure all our children and young people reach their full potential by having high aspirations for, and creating opportunities with, those who are disadvantaged through poverty or vulnerability. We want to support families in overcoming difficulties and being able to care for their children and each other.